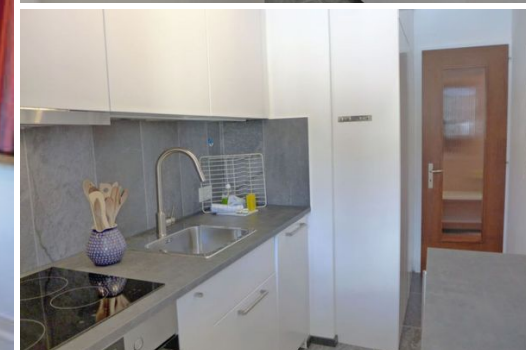
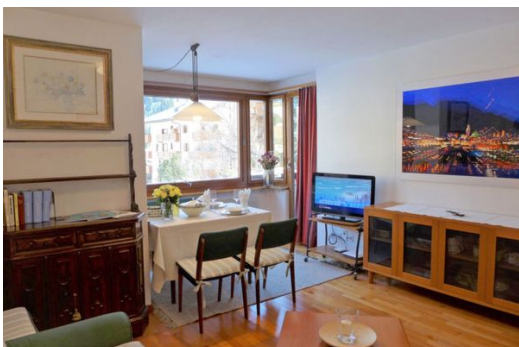


Nice and budget apartment for rent in St. Moritz Bad

Switzerland, St. Moritz, Bad

Apartment - REF: TGS-A878



Long Term Rental: 6.068 €/Month Short Term Rental: 1.517 €/Week

N° Bedrooms: 2	N° Bathrooms: 1	N° People: 4	M² built: 70 m²	Exposure: Southwest	Floor: 1	Wifi	Fireplace
Communal lift	Air conditioning	Dishwasher	TV	Washing machine	Pets allowed	Store Room	
Activities in resort							
Skiing/Snowboarding	Cycling	Cross country skiing	Golf	Hiking	Mountain-Biking	Riding	

Inside

3-room apartment 70 m2 on 1st floor. Comfortable and cosy furnishings: living/dining room with TV (flat screen), hi-fi system. Exit to the balcony, to the patio, south-east facing position. 1 room, window onto the courtyard with 1 double bed (2 x 90 cm, length 200 cm). 1 room, window onto the courtyard with 2 beds (90 cm, length 200 cm). Small kitchen (oven, dishwasher, 4 ceramic glass hob hotplates, electric coffee machine, Capsules for coffee machine (Nespresso) extra). Bath/WC. Parquet floors. Balcony furniture (2). Very beautiful panoramic view of the mountains and the countryside. Facilities: iron, hair dryer. Internet (WiFi, free). Garage space on the property, height 190 cm, width 210 cm. Please note: suitable for families. Non-smokers only, parking space for small car only. Maximum 1 small pet/ dog allowed.

House/Residence

St. Moritz Bad: Comfortable small apartment house "Chesa Arlas", 4 storeys, built in 1965. In a sunny, elevated position in the residential district. In the house: washing machine, tumble dryer (for shared use, extra). In Winter: please take snow chains, 4x4 car recommended in winter. Steep footpath to the house. Single garage at the house. Shop 400 m, supermarket 450 m, restaurant 400 m, bakery, café 450 m, bus stop "Via Salet" 400 m, indoor swimming pool 900 m. Golf course (18 hole) 7 km, surf school 1 km, sailing school 1.2 km, indoor tennis centre 1.3 km, riding stable 800 m, mountain railway 1.2 km, ski rental 1.2 km, ski bus stop 400 m, cross country ski track 1.2 km, children's playground 800 m. Well-known ski regions can easily be reached: Corviglia, Corvatsch 7.1 km. Well-known lakes can easily be reached: St.

Moritzer See 900 m, Champferer See 4 km, Silvaplanersee 6.5 km. Hiking paths: Fextal 11 km, Roseggtal 8 km. The keys' handover takes place by the agency Interhome AG in St. Moritz Bad.

Prior to your departure, you will receive the key collection information for your stay, along with your travel documents.

