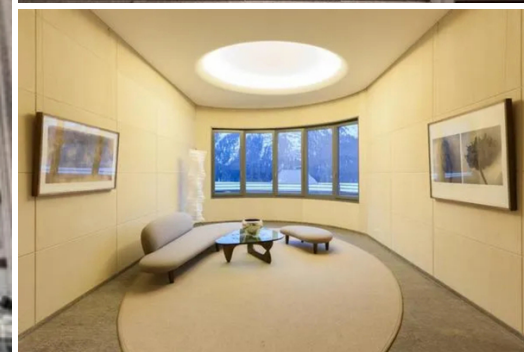
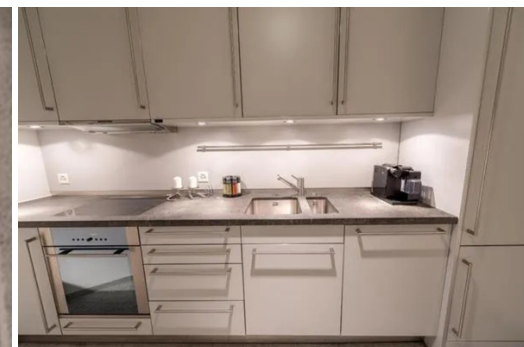
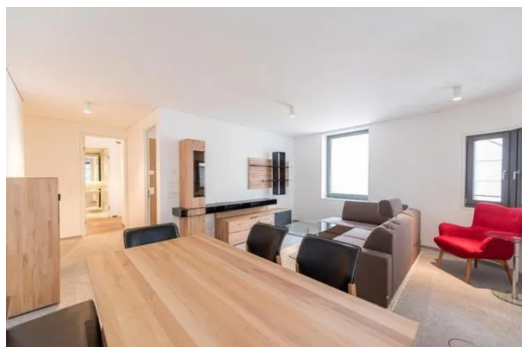


Contemporary Alpine living in a cozy 3 1/2 room apartment

Switzerland, St. Moritz, Dorf

Apartment - REF: TGS-A2666



| | | | | | | | |
|----------------------------|-----------------------------|--------------|-----------------|-----------------|------------|-------------|-----------------------|
| N° Bedrooms: 2 | N° Bathrooms: 2 | N° People: 5 | Parking | M² built: 92 m² | Floor: 5 | Wifi | Sauna |
| Communal SPA | Dishwasher | TV | Washing machine | Pets allowed | Store Room | Gym/Fitness | Distance to lake: 1km |
| Distance to ski lift: 500m | Distance to centre: central | | | | | | |

Activities in resort

| | | | | | | | |
|---------------------|---------|----------------------|------|--------|-----------------|--------|---------|
| Skiing/Snowboarding | Cycling | Cross country skiing | Golf | Hiking | Mountain-Biking | Riding | Sailing |
| Surfing | Tennis | | | | | | |

Luxurious living in the heart of St. Moritz Dorf - Extraordinary, Contemporary Apartment for rental

Contemporary Alpine living in a cozy 2 bedrooms apartment on the 5th floor with corner window, street view.

The tastefully decorated living rooms are fitted with flagstones, while the bedrooms have wooden floors, Recently renovated and high-quality.

The apartment has two bedrooms with double beds and has plenty of storage space.

Nice apartment in one or multi-family boulding

Fifth floor (lift available)

92 m² Living area and 2 bedrooms, 1 kitchen, 2 bathrooms, 1 living room

Pet permitted, 1 pet large (over 60 cm)

View: Street

Access to accommodation: Stairs

Parking, Garage

Bedroom 1

17 m²

sleeping places: 1 double bed (180 x 200 cm)

Blinds available

Bedroom 2

12 m²

sleeping places: 1 double bed (180 x 200 cm)

Blinds available

Bathroom 1

5 m²

Bath tub with shower, Toilet, Bidet

Bathroom 2

3.50 m²

Shower, Toilet

Living room

25 m²

Separate dining area, Sofa

also serves as a bedroom (1 sleeping place: Sofa bed, Additional bed)

Blinds available

Kitchen

8 m²

Separate kitchen

Coffee machine, Electric stove, Oven, Cooking facilities (four hobs), Fitted kitchen, Cooler/freezer combination, Extractor hood, Espresso machine, Refrigerator

Other furnishings

Under-floor heating, Central heating (oil/gas/night saver)

Dishwasher, Separate drying room (joint use), Washing machine, Dryer/drying facilities, Shared washing machine

DVD, TV

Internet access, Mobile telephone reception possible, WLAN / Wifi (Internet TV and WIFI are available free of charge, a DVD player is also available.)

The parking lot can be reached with an underground passageway.

The use of the gym and SPA with sauna and steam room is included.

Services (with costs if applicable): Breakfast, Cleaning service during your stay.

The cable car to the Corviglia and other places can be reached in 5 minutes. The nearest bus stop is less than 100m away.

Restaurant: 0.50 km, ski resort: Corviglia, ski lift / cable car: 0.50 km, ski lift / cable car: 0.50 km, cross-country ski trail: 1.50 km, cross-country ski trail: 1.50 km, shopping facility: 0.50 km, city: Chur (80 km)





