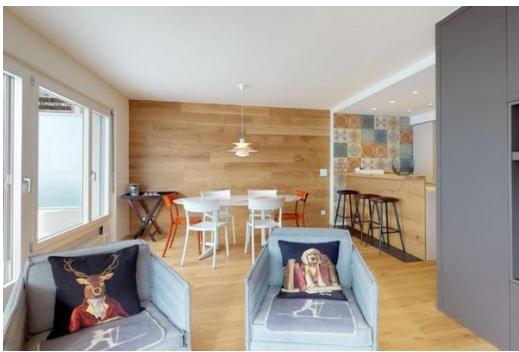


# Apartment in St. Moritz

Switzerland, St. Moritz

Apartment - REF: TGS-A1520



N° Bedrooms: 2  
TV

N° Bathrooms: 2  
Washing machine

N° People: 5  
Distance to lake: 500m

N° parking's: 1  
Distance to ski lift: 500m

M² built: 85 m²  
Distance to centre: central

Terrace

Wifi

Dishwasher

## Activities in resort

Skiing/Snowboarding  
Surfing

Cycling  
Tennis

Cross country skiing

Golf

Hiking

Mountain-Biking

Riding

Sailing

The traditional residential building is located in the heart of St. Moritz-Dorf.

The convenient location is a major advantage in your vacation. Within short walking distance you reach various restaurants, shopping facilities, the mountain railway Corviglia and the historic Badrutts Palace Hotel, from where you can reach the lake of St. Moritz within a few minutes by escalator.

Very bright, modern renovated apartment.

The new decor was chosen with great attention to details.

The apartment has a living/dining room with TV, open, well-equipped kitchen and balcony on two sides.

1 bedroom with double bed and elevated single bed as well as TV and 1 further double bedroom.

1 bath/DU/WC as well as 1 shower/WC.

1 Garage space (moving rack - only limited car size max. 1.8 tons, wheelbase 1.80m x 3.20m), free WiFi.

General

1 Parking lot (Garage)

Covered terrace

Non-smoker

Washing machine(Communal)

Dryer(Communal)

Balcony

Kitchen

Toaster

Microwave

Dishwasher

Dish towels

Espresso machine (Dolce Gusto)

Coffee machine

Kettle

Stove (Induction)

Bath

Shower

Bathtub

WC

Hair dryer

Entertainment

Wifi connection

Radio

2x TV

Bedrooms

Bedroom: 1 Twin bed 180x200

Bedroom: 1 Twin bed 180x200,

1 Single bed 90x200

Living/sleeping room: 1 Twin bed 180x200

Distance

Ski lift / cross country ski trail

0,2 km

Lake

0,4 km

Shopping

0,1 km

Restaurant

0,1 km

Bus stop

0,1 km

Train station

0,5 km





